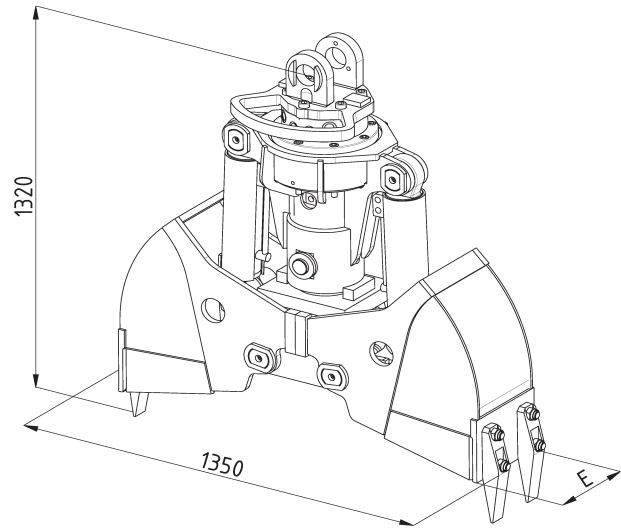
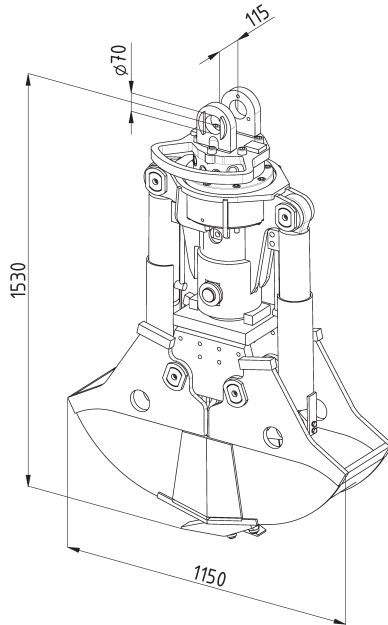
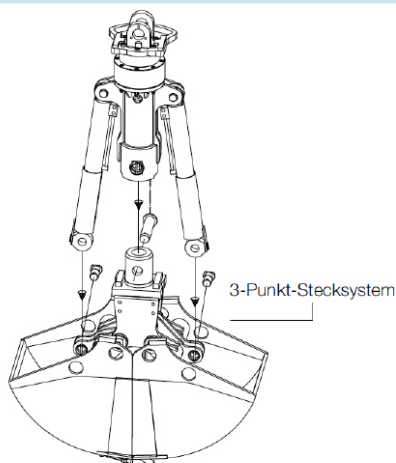


# Series|DC2.5 - RW

Excavator weight class: 13 - 21 t  
Two-shell excavation grab



Type	Capacity SAE (l)	Weight (kg)	Cutting width E (mm)	Number of teeth
DC2.5 - RW-290	115	620	290	3
DC2.5 - RW-300	125	650	300	3
DC2.5 - RW-400	165	675	400	3
DC2.5 - RW-500	205	710	500	5
DC2.5 - RW-600	250	740	600	5
DC2.5 - RW-700	290	790	700	7



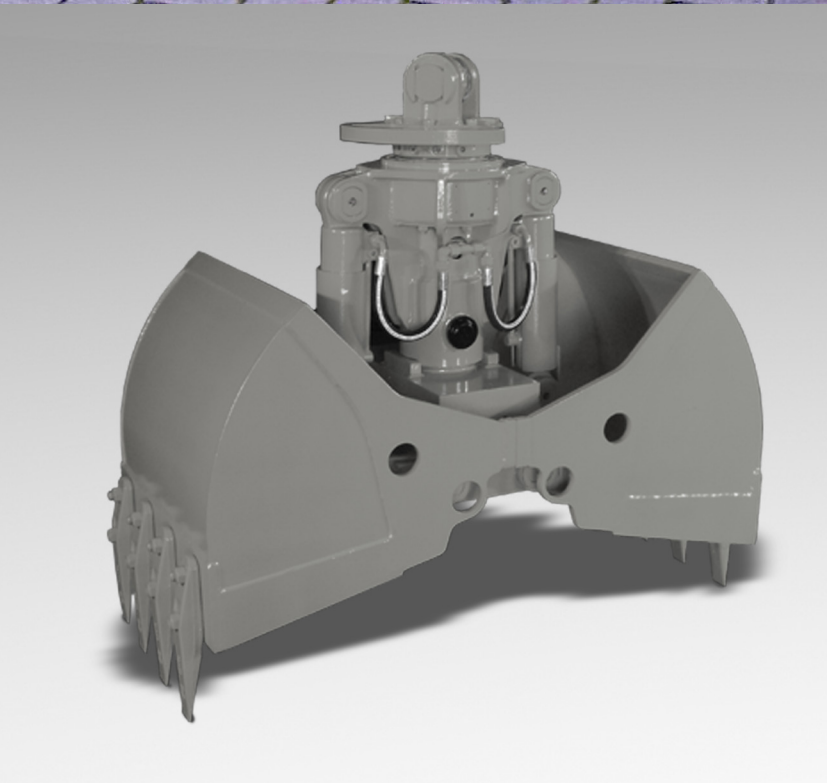
## Technical specifications|DC2.5-RW

Excavator weight class:	t	13-21
Max. grab load bearing capacity	t	Grab: 4 / slewing gear: 10
Bulk weight up to	t/m <sup>3</sup>	2
Max. operating pressure	bar	300 (grab function) / 250 (turning function)
Max. closing force	kN	64
Connections		Slewing: G1/2 / Gripping: G3/4



### **|Use: Mobile and chain excavators**

Multipurpose excavation grab for typical hydraulic excavator tasks such as excavation and digging natural soil, digging ditches and cable trenches, loading dirt, gravel and sand, lifting objects of all kinds.



### **|Design features**

- Short design especially for rail construction with a 2-way excavator
- The shells and shell carriers are exchangeable with a 3-point plug-in system within the entire series
- Continuously rotatable hydraulic rotary drive
- Side and base edges made of high-strength fine-grain steel (HB 450)
- Forged 3-hole screw-on teeth
- Piston rod protection, hose protective plate for the hydraulic connections on the slewing gear

### **|Available accessories and equipment**

- Hose set and mounting for all known excavator manufacturers
- Mounting with pendular brake
- Grab extension
- Compact motor
- Load hooks, bucket teeth
- Special shells (such as round hole shells, HD design)
- Special shells according to customer specifications
- Additional special equipment upon request