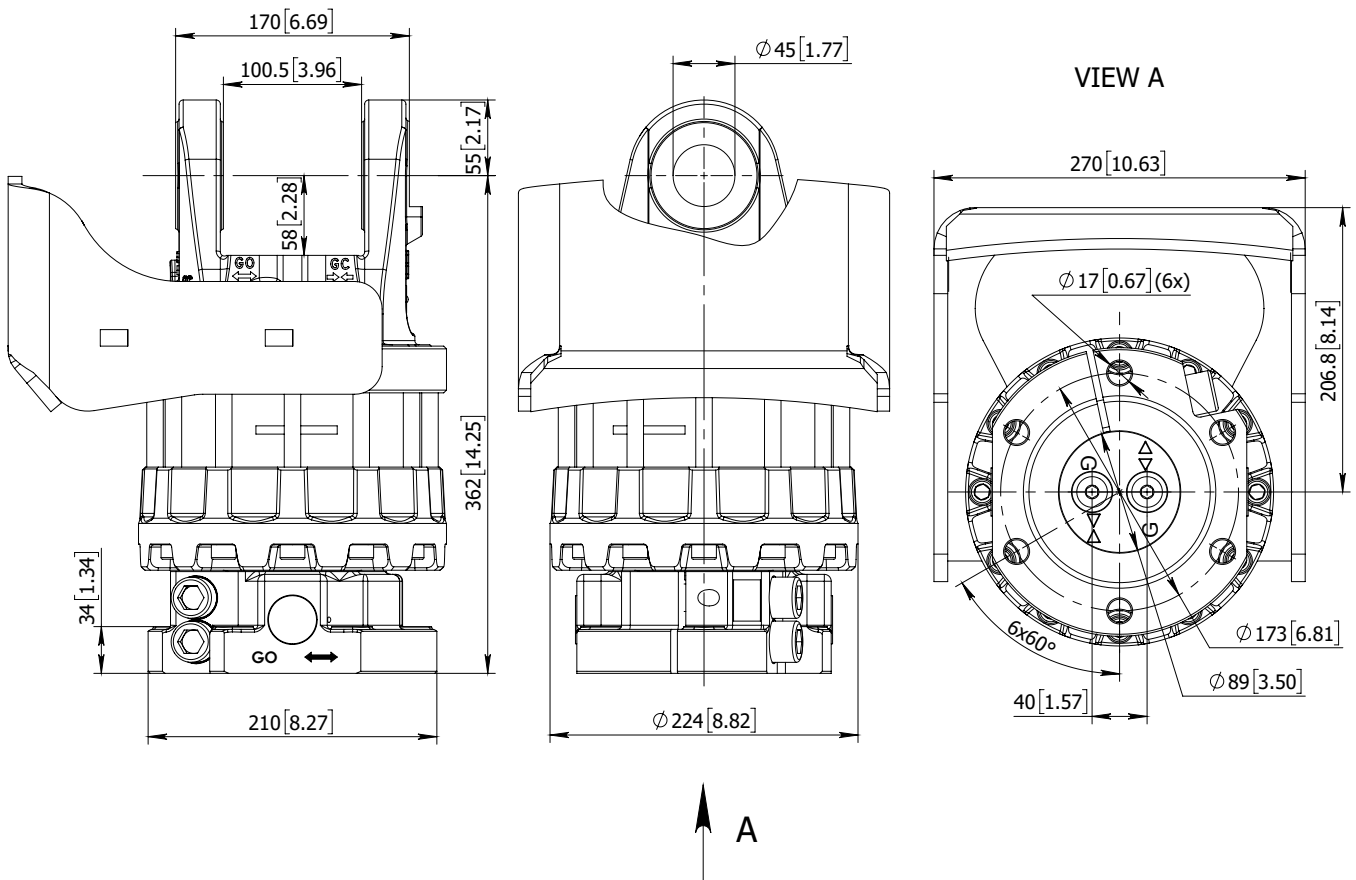
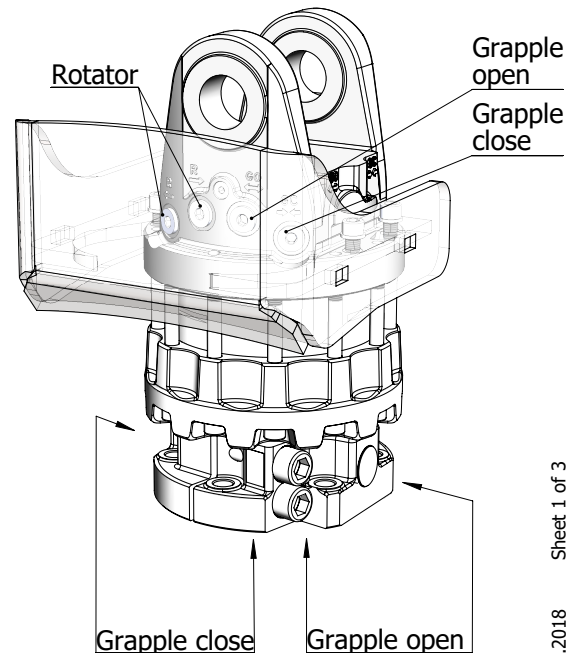


# ROTATOR GR12SCX



## Technical data

|                                       |  |
|---------------------------------------|--|
| Rotation                              | Unlimited                              |
| Max axial load static, KN (lbf)       | +120 (26982)<br>- 90 (20236)           |
| Max axial load dynamic, KN (lbf)      | +60 (13491)<br>- 45 (10118)            |
| Torque at 25Mpa (3625psi), Nm (lb ft) | 2900 (2139)                            |
| Rec oilflow, l/min (US gallon)        | 35 (9.25)                              |
| Weight, kg (lb)                       | 75 (165)                               |
| <b>Max working pressure:</b>          | <b>Connection:</b>                     |
| Rotator            ←R→                | Max 25 MPa (3625 psi)    3/4-16 UNF 2B |
| Grapple / Tool open   ←G→             | Max 30 MPa (4350 psi)    3/4-16 UNF 2B |
| Grapple / Tool close   →G←            | Max 30 MPa (4350 psi)    3/4-16 UNF 2B |



02.01.2018 Sheet 1 of 3